

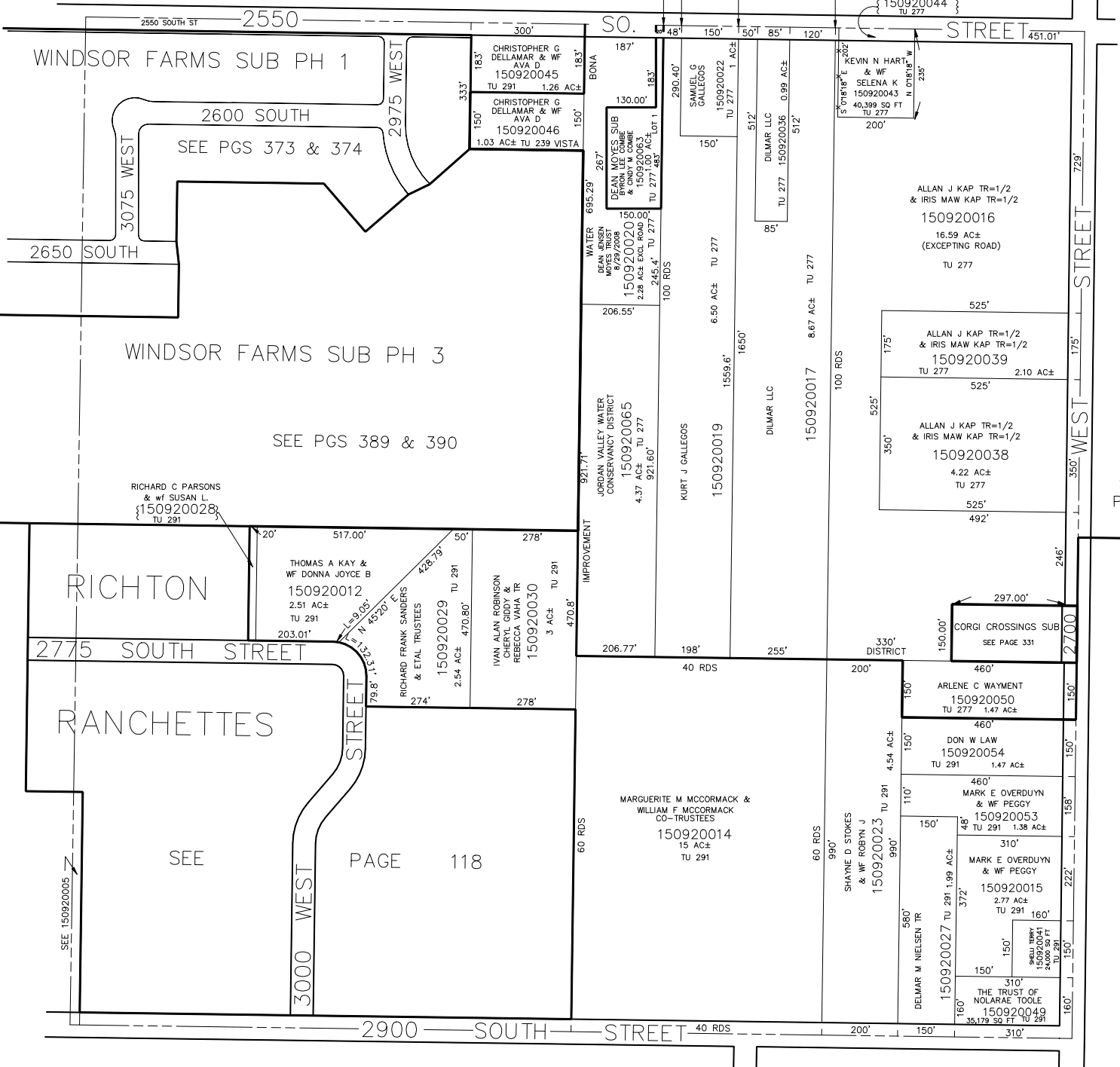
N.E. 1/4
SECTION 34, T.6N., R.2W., S.L.B. & M.

IN WEST HAVEN CITY

TAXING UNIT: 239, 277, 291

SCALE 1" = 200'

SEE PAGE 76



WEBER COUNTY
150920044
TU 277

SEE PAGE 96

SEE PGS 389 & 390

SEE PGS 373 & 374

SEE PAGE 118

SEE 150920005

SEE BOOK 8, PAGE 30